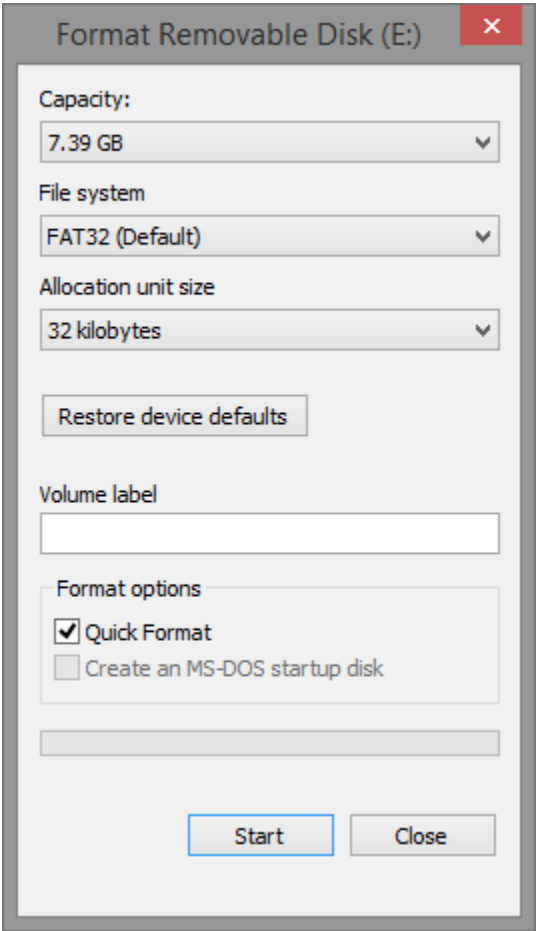

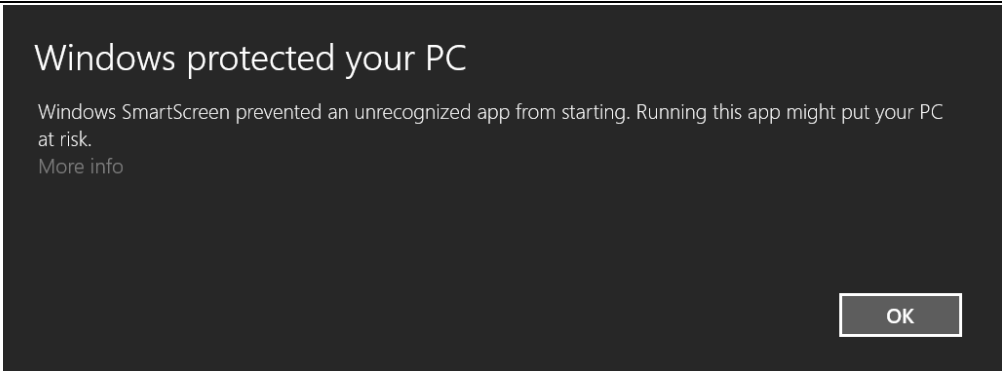


## OneAdvisor-800

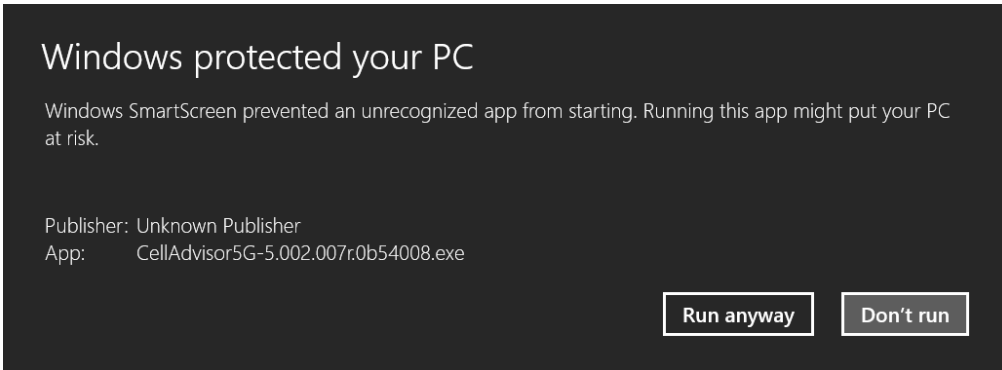
### Recovery Procedure

This procedure describes the steps required to reimage OneAdvisor’s firmware.

<ul style="list-style-type: none"> <li>• Format a microSD card to be used for the upgrade by opening file manager and doing a right-click on the microSD drive and select “Format”.</li> <li>• Make sure the File System is FAT and the Allocation unit size is 32 kilobytes</li> <li>• Select “Start”</li> </ul>	
<ul style="list-style-type: none"> <li>• Download the reimage firmware from the site</li> </ul>	<p><a href="http://ona-800.updatemyunit.net">http://ona-800.updatemyunit.net</a></p>
<ul style="list-style-type: none"> <li>• Double click on the downloaded executable file</li> </ul>	
<ul style="list-style-type: none"> <li>• In case windows is running a protection software or firewall, the following warning message might be displayed</li> </ul>	

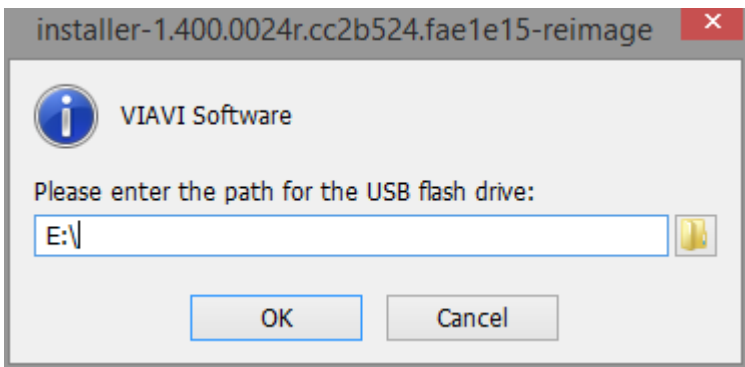


- Select “More Info”

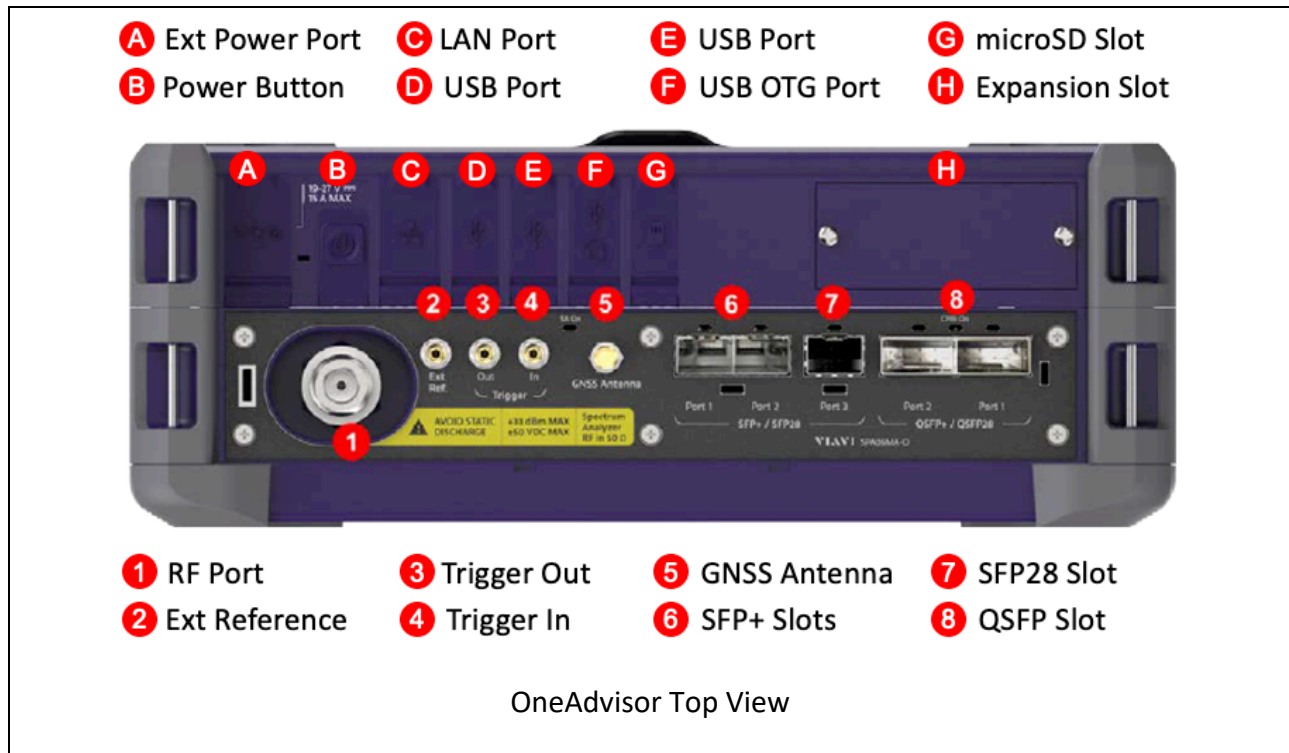


- Select “Run anyway”

- On the pop-on window select the drive where the formatted microSD card is located (e.g. drive D)
- Select “OK”
- The application will automatically extract all the required files into the microSD card



- Extract the microSD card and plug it into the OneAdvisor microSD port (G)



- Reboot the OneAdvisor  
OneAdvisor will initialize by installing the firmware from the microSD card in terminal mode.  
At the completion of the firmware installation and verification it'll indicate to remove the microSD card to continue.  
The OneAdvisor will restart and initialize.